

DIVISIBLE FROM 2 ACRES TO ±22 NET ACRES FOR LEASE

11731 Terrace Avenue • Grand Terrace, California 92313

EQUIPMENT / SURFACE / VEHICLE STORAGE YARD



Features

- Truck, Trailer and Container Storage
- 6" Crushed Asphalt Base
- Fenced, Lit & Highly Secured Yard
- ±650 Trailer Storage Sites
- ±500 Square Feet Office Space with HVAC & Restroom
- Immediate Access to 10, 215 & 60 Freeways
- APNs: 0275-191-06 (15.64 Acres)
0275-191-30 (12 Acres)

For more information, please contact:



Brian Pharris
Senior Vice President
909.989.7771
bpharris@lee-assoc.com
CA License #01329363

Ryan Earnhart
Senior Vice President
909.989.7771
rearnhart@lee-assoc.com
CA License #01426559

NEWMARK

Steve Sprenger
Vice Chairman
909.974.4078
steve.sprenger@nmrk.com
CA License #01202806

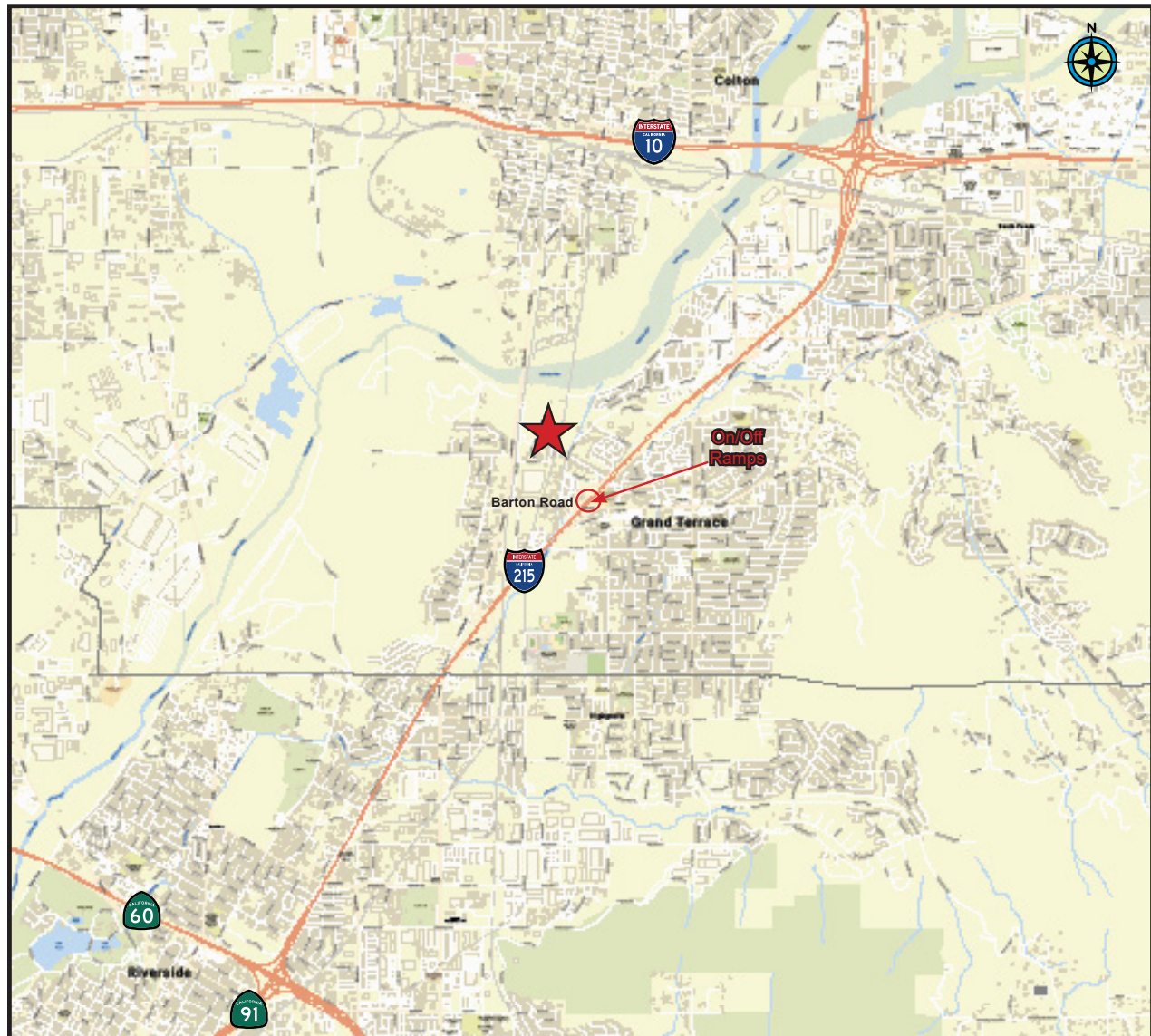
Randy Lockhart
Vice Chairman
909.974.4067
randy.lockhart@nmrk.com
CA License #00974981

DIVISIBLE FROM 2 ACRES TO ±22 NET ACRES FOR LEASE

11731 Terrace Avenue • Grand Terrace, California 92313

EQUIPMENT / SURFACE / VEHICLE STORAGE YARD

LOCATOR MAP



NEWMARK

Brian Pharris
Senior Vice President
909.989.7771
bpharris@lee-assoc.com
CA License #01329363

Ryan Earnhart
Senior Vice President
909.989.7771
rearnhart@lee-assoc.com
CA License #01426559

Steve Sprenger
Vice Chairman
909.974.4078
steve.sprenger@nmrk.com
CA License #01202806

Randy Lockhart
Vice Chairman
909.974.4067
randy.lockhart@nmrk.com
CA License #00974981

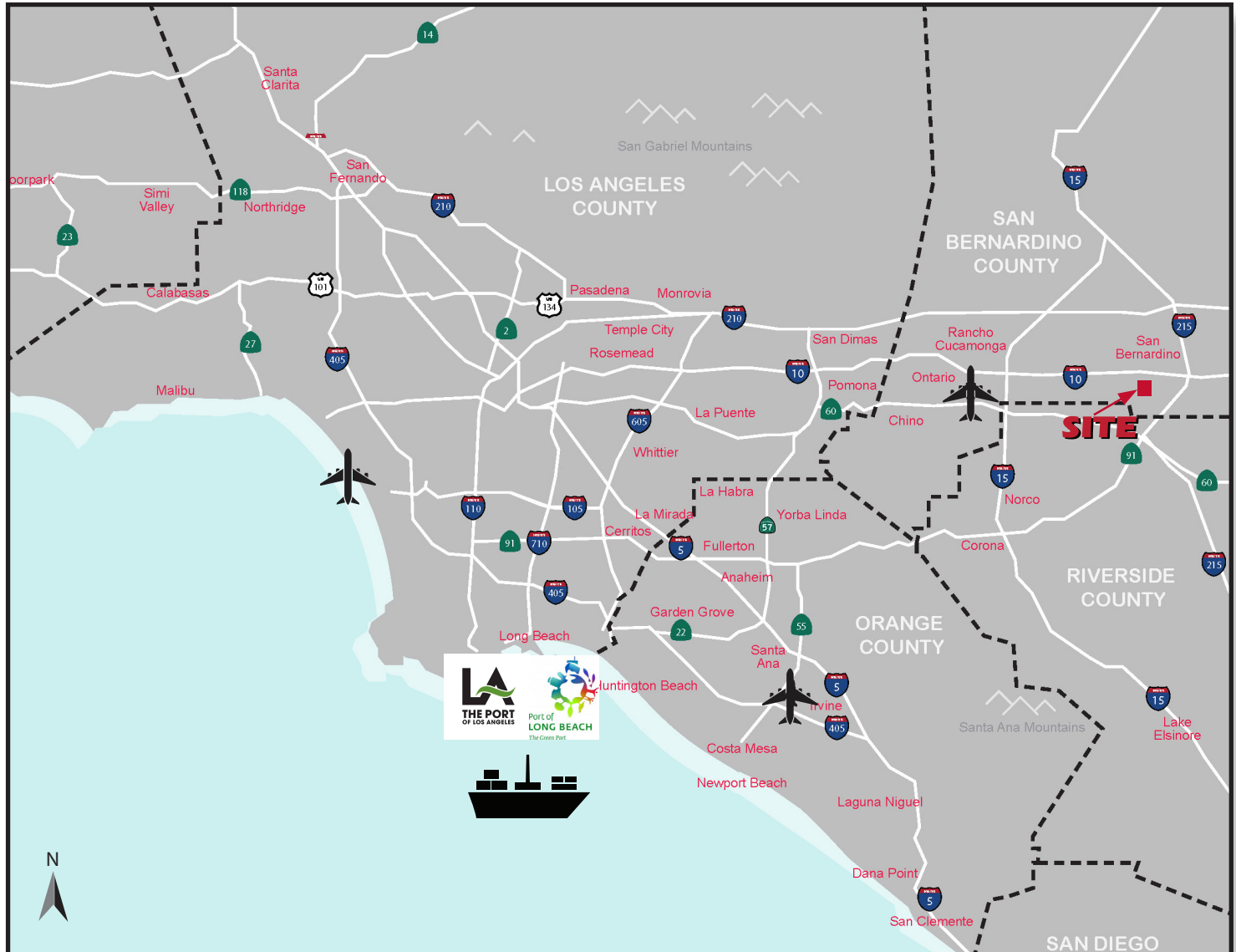
The information contained herein was obtained from sources believed reliable; however, Lee & Associates / Newmark makes no guarantees, warranties, or representations as to the completeness or accuracy thereof. The presentation of this property is submitted subject to errors, omissions, change of price or conditions prior to sale or lease, or withdrawal without notice.

DIVISIBLE FROM 2 ACRES TO ±22 NET ACRES FOR LEASE

11731 Terrace Avenue • Grand Terrace, California 92313

EQUIPMENT / SURFACE / VEHICLE STORAGE YARD

REGIONAL MAP



NEWMARK

Brian Pharris
Senior Vice President
909.989.7771
bpharris@lee-assoc.com
CA License #01329363

Ryan Earnhart
Senior Vice President
909.989.7771
rearnhart@lee-assoc.com
CA License #01426559

Steve Sprenger
Vice Chairman
909.974.4078
steve.sprenger@nmrk.com
CA License #01202806

Randy Lockhart
Vice Chairman
909.974.4067
randy.lockhart@nmrk.com
CA License #00974981

The information contained herein was obtained from sources believed reliable; however, Lee & Associates / Newmark makes no guarantees, warranties, or representations as to the completeness or accuracy thereof. The presentation of this property is submitted subject to errors, omissions, change of price or conditions prior to sale or lease, or withdrawal without notice.

Lee & Associates • 3535 Inland Empire Blvd., Ontario, CA 91764 • 909.989.7771 • Corporate RE #00976995
Newmark • 3281 East Guasti Road, Suite 370, Ontario, California 91761 • Tel: 909.974.4067 • Corporate RE #01355491

